

Quadra St between Reynolds Rd and Union Rd

October 28, 2019 To November 01, 2019



The data presented here is for information purposes only and should not be considered authoritative for construction, geotechnical, engineering, navigational, legal, or other site-specific uses. The information shared is owned by the Transportation Division of the Engineering Department at the District of Saanich. Accuracy is not guaranteed.

Start Date: 28-Oct-19
 Start Time: 0:00
 Station ID: M0027-09

Location 1: Quadra St between Reynolds Rd and Union Rd

Note:

DATE:	October 28, 2019		October 29, 2019		October 30, 2019		October 31, 2019		November 1, 2019		WK AVG		WK AVG	HOURLY
	MON		TUE		WED		THURS		FRI		NB	SB	CH 1+2	%
Time:	NB	SB	NB	SB	NB	SB	NB	SB	NB	SB	NB	SB		
12-1 AM			34	45	43	31	36	34			38	37	74	0.4%
1-2 AM			25	13	22	16	23	23			23	17	41	0.2%
2-3 AM			12	11	21	16	16	10			16	12	29	0.2%
3-4 AM			9	12	17	13	16	9			14	11	25	0.1%
4-5 AM			22	12	22	18	26	14			23	15	38	0.2%
5-6 AM			69	52	58	47	70	56			66	52	117	0.6%
6-7 AM			150	162	152	170	169	183			157	172	329	1.8%
7-8 AM			446	431	446	459	449	431			447	440	887	4.9%
8-9 AM			629	695	636	698	645	758			637	717	1354	7.5%
9-10 AM			556	542	552	530	539	492			549	521	1070	5.9%
10-11 AM			514	523	530	515	581	582			542	540	1082	6.0%
11-12 PM			608	628	602	604	598	650			603	627	1230	6.8%
12-1 PM			598	596	597	549	622	642			606	596	1201	6.7%
1-2 PM			645	565	690	559	635	582			657	569	1225	6.8%
2-3 PM			753	631	703	622	713	639			723	631	1354	7.5%
3-4 PM			839	752	834	693	797	701			823	715	1539	8.5%
4-5 PM			924	745	919	766	993	705			945	739	1684	9.3%
5-6 PM			879	632	828	692	874	573			860	632	1493	8.3%
6-7 PM			570	474	517	457	460	404			516	445	961	5.3%
7-8 PM			382	387	393	372	326	350			367	370	737	4.1%
8-9 PM			278	272	327	288	286	304			297	288	585	3.2%
9-10 PM			263	218	336	231	237	244			279	231	510	2.8%
10-11 PM			161	118	146	163	164	174			157	152	309	1.7%
11-12 AM			90	77	94	83	123	109			102	90	192	1.1%
LANES			9456	8593	9485	8592	9398	8669			9446	8618	18064	100.0%
TOTAL			18049		18077		18067				18070			
	MON		TUE		WED		THURS		FRI		WK AVG			

PEAK HOUR					TOTAL VEHICALS-PEAK PERIODS		2 HOUR PEAK INTERVALS							
MAX. 7 - 9 am PEAK HOUR	1354	⇒	7.5%	between 8-9 AM	7849	⇒	6 HR TOTAL	2 HR AM (7 - 9 AM)						
MAX. 7 - 11 am PEAK HOUR	1354	⇒	7.5%	between 8-9 AM	5418	⇒	4 HR TOTAL	VEH / HR	VEH / 2HR	2 HR %				
MAX. 11 am - 1 pm PEAK HOUR	1230	⇒	6.8%	between 11-12 PM					7-8 AM	887	2241	12.4%		
MAX. 11 am - 3 pm PEAK HOUR	1354	⇒	7.5%	between 2-3 PM					8-9 AM	1354				
MAX. 4 - 6 pm PEAK HOUR	1684	⇒	9.3%	between 4-5 PM					2 HR NOON (11 - 1 PM)					
MAX. 3 - 6 pm PEAK HOUR	1684	⇒	9.3%	between 4-5 PM					VEH / HR	VEH / 2HR	2 HR %			
									11-12 PM	1230	2431	13.5%		
									12-1 PM	1201				
									2 HR PM (4 - 6 PM)					
									VEH / HR	VEH / 2HR	2 HR %			
									4-5 PM	1684	3177	17.6%		
									5-6 PM	1493				

Quadra St between Reynolds Rd and Union Rd

Northbound

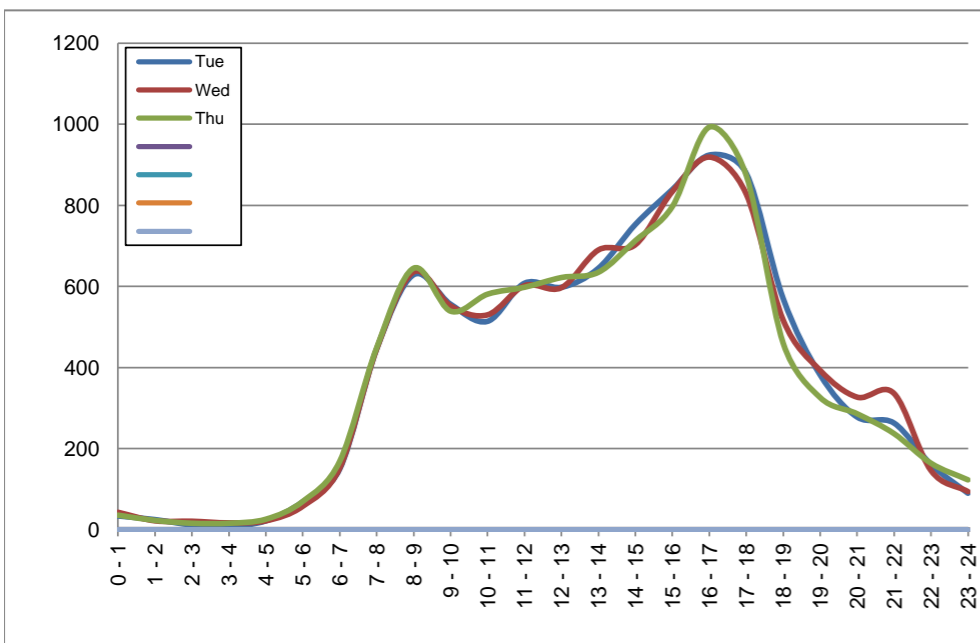
October 29, 2019 to October 31, 2019

Hourly Volumes

Time Period	Tue	Wed	Thu				
	Oct 29	Oct 30	Oct 31				
0 - 1	34	43	36				
1 - 2	25	22	23				
2 - 3	12	21	16				
3 - 4	9	17	16				
4 - 5	22	22	26				
5 - 6	69	58	70				
6 - 7	150	152	169				
7 - 8	446	446	449				
8 - 9	629	636	645				
9 - 10	556	552	539				
10 - 11	514	530	581				
11 - 12	608	602	598				
12 - 13	598	597	622				
13 - 14	645	690	635				
14 - 15	753	703	713				
15 - 16	839	834	797				
16 - 17	924	919	993				
17 - 18	879	828	874				
18 - 19	570	517	460				
19 - 20	382	393	326				
20 - 21	278	327	286				
21 - 22	263	336	237				
22 - 23	161	146	164				
23 - 24	90	94	123				
Day Total	9456	9485	9398				

15-Minute Volumes

Time Start	Tue	Wed	Thu				
	Oct 29	Oct 30	Oct 31				
0:00	11	15	8				
0:15	9	17	12				
0:30	6	4	8				
0:45	8	7	8				
1:00	5	9	4				
1:15	6	3	8				
1:30	9	4	6				
1:45	5	6	5				
2:00	0	5	6				
2:15	5	5	2				
2:30	5	6	5				
2:45	2	5	3				
3:00	3	2	2				
3:15	3	4	6				
3:30	1	6	2				
3:45	2	5	6				
4:00	3	3	3				
4:15	3	4	4				
4:30	12	7	8				
4:45	4	8	11				
5:00	8	9	13				
5:15	14	9	18				
5:30	21	17	22				
5:45	26	23	17				
6:00	21	21	28				
6:15	37	32	31				
6:30	33	40	44				
6:45	59	59	66				
7:00	81	73	77				
7:15	105	103	99				
7:30	110	113	116				
7:45	150	157	157				
8:00	161	157	182				
8:15	188	167	191				
8:30	136	152	138				
8:45	144	160	134				
9:00	131	134	145				
9:15	140	117	126				
9:30	141	151	132				
9:45	144	150	136				
10:00	121	131	138				
10:15	152	126	145				
10:30	109	144	135				
10:45	132	129	163				
11:00	149	146	128				
11:15	138	143	134				
11:30	155	162	180				
11:45	166	151	156				
12:00	148	152	175				
12:15	162	147	155				
12:30	140	131	139				
12:45	148	167	153				
13:00	150	178	142				
13:15	185	146	163				
13:30	150	167	165				
13:45	160	199	165				
14:00	186	171	174				
14:15	192	181	174				
14:30	185	179	194				
14:45	190	172	171				
15:00	205	202	176				
15:15	207	217	167				
15:30	221	206	222				
15:45	206	209	232				
16:00	205	210	254				
16:15	233	236	231				
16:30	261	230	244				
16:45	225	243	264				
17:00	266	237	236				
17:15	227	225	270				
17:30	226	202	240				
17:45	160	164	128				
18:00	154	143	140				
18:15	157	142	132				
18:30	140	104	92				
18:45	119	128	96				
19:00	91	103	100				
19:15	105	116	71				
19:30	110	96	78				
19:45	76	78	77				
20:00	73	97	67				
20:15	52	73	75				
20:30	69	86	61				
20:45	84	71	83				
21:00	67	92	66				
21:15	49	80	68				
21:30	56	102	54				
21:45	91	62	49				
22:00	52	38	43				
22:15	52	46	39				
22:30	31	36	44				
22:45	26	26	38				
23:00	33	34	30				
23:15	25	22	36				
23:30	18	23	28				
23:45	14	15	29				



Site notes:

Quadra St between Reynolds Rd and Union Rd

Southbound

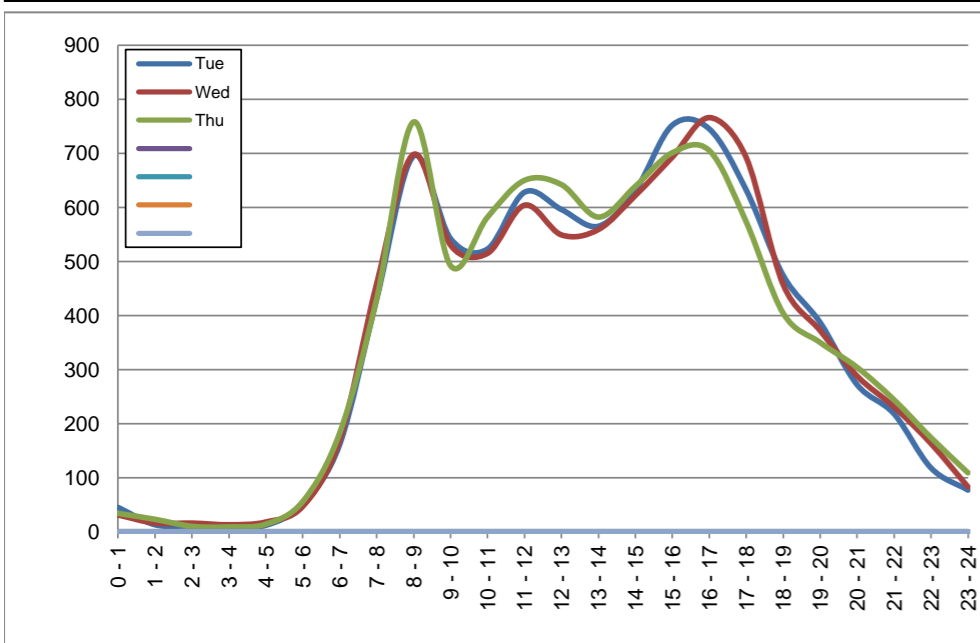
October 29, 2019 to October 31, 2019

Hourly Volumes

Time Period	Tue	Wed	Thu			
	Oct 29	Oct 30	Oct 31			
0 - 1	45	31	34			
1 - 2	13	16	23			
2 - 3	11	16	10			
3 - 4	12	13	9			
4 - 5	12	18	14			
5 - 6	52	47	56			
6 - 7	162	170	183			
7 - 8	431	459	431			
8 - 9	695	698	758			
9 - 10	542	530	492			
10 - 11	523	515	582			
11 - 12	628	604	650			
12 - 13	596	549	642			
13 - 14	565	559	582			
14 - 15	631	622	639			
15 - 16	752	693	701			
16 - 17	745	766	705			
17 - 18	632	692	573			
18 - 19	474	457	404			
19 - 20	387	372	350			
20 - 21	272	288	304			
21 - 22	218	231	244			
22 - 23	118	163	174			
23 - 24	77	83	109			
Day Total	8593	8592	8669			

15-Minute Volumes

Time Start	Tue	Wed	Thu			
	Oct 29	Oct 30	Oct 31			
0:00	13	13	13			
0:15	14	6	9			
0:30	9	4	6			
0:45	9	8	6			
1:00	4	6	8			
1:15	5	3	2			
1:30	3	5	8			
1:45	1	2	5			
2:00	2	4	3			
2:15	3	6	3			
2:30	3	5	2			
2:45	3	1	2			
3:00	1	1	3			
3:15	4	2	0			
3:30	5	5	3			
3:45	2	5	3			
4:00	3	2	3			
4:15	2	6	2			
4:30	4	4	5			
4:45	3	6	4			
5:00	9	5	8			
5:15	12	7	4			
5:30	11	20	22			
5:45	20	15	22			
6:00	21	23	29			
6:15	32	30	37			
6:30	48	55	55			
6:45	61	62	62			
7:00	71	72	72			
7:15	80	100	87			
7:30	134	115	128			
7:45	146	172	144			
8:00	156	161	164			
8:15	207	196	214			
8:30	181	183	203			
8:45	151	158	177			
9:00	126	127	123			
9:15	133	134	140			
9:30	133	139	119			
9:45	150	130	110			
10:00	115	121	141			
10:15	154	109	157			
10:30	127	151	125			
10:45	127	134	159			
11:00	147	139	161			
11:15	157	141	159			
11:30	160	160	166			
11:45	164	164	164			
12:00	144	139	182			
12:15	151	124	145			
12:30	165	138	147			
12:45	136	148	168			
13:00	149	135	155			
13:15	137	141	143			
13:30	146	154	147			
13:45	133	129	137			
14:00	164	165	153			
14:15	142	133	167			
14:30	151	172	144			
14:45	174	152	175			
15:00	167	181	170			
15:15	211	184	162			
15:30	199	170	187			
15:45	175	158	182			
16:00	196	199	169			
16:15	180	179	160			
16:30	192	191	195			
16:45	177	197	181			
17:00	186	203	177			
17:15	171	167	151			
17:30	158	162	124			
17:45	117	160	121			
18:00	127	113	123			
18:15	125	124	103			
18:30	108	115	82			
18:45	114	105	96			
19:00	104	112	103			
19:15	118	105	92			
19:30	84	88	87			
19:45	81	67	68			
20:00	74	95	73			
20:15	79	72	86			
20:30	50	59	84			
20:45	69	62	61			
21:00	57	68	78			
21:15	59	49	59			
21:30	63	61	55			
21:45	39	53	52			
22:00	31	52	52			
22:15	25	42	47			
22:30	35	34	39			
22:45	27	35	36			
23:00	28	35	38			
23:15	21	18	25			
23:30	15	20	20			
23:45	13	10	26			



Site notes:

Vehicle Speed Summary

Saanich Engineering Department

Count Id: **M0027-09**

Filename: [Quadra St between Reynolds Rd and Union Rd-Oct-2019-v2.xlsm](#)

Location: Quadra St between Reynolds Rd and Union Rd

Note:

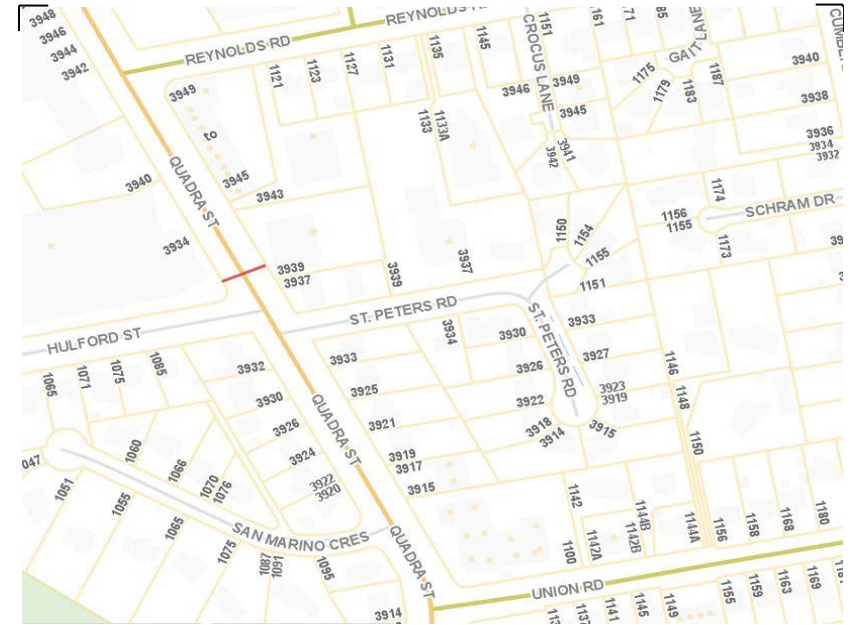
Direction: **North-South**

Dates: **October 28, 2019 To November 01, 2019**

Filtered data

AVG. SPEED	29 mph	47 km/h
50 % SPEED	30 mph	48 km/h
85 % SPEED	34 mph	56 km/h
95 % SPEED	38 mph	60 km/h

Location Map



Quadra St between Reynolds Rd and Union Rd

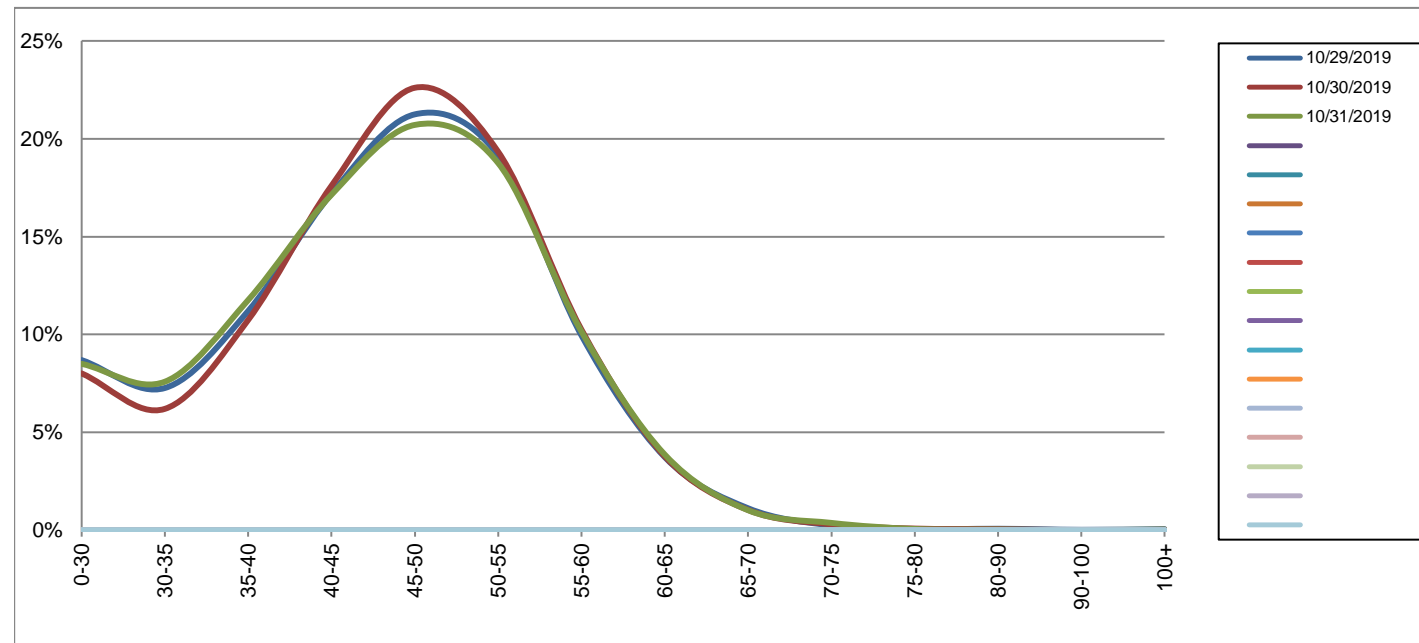
Northbound

October 29, 2019 to October 31, 2019

Daily Speed Bin Percentages															Daily Speed Bin Volumes														Total	Avg.
Bin #	1	2	3	4	5	6	7	8	9	10	11	12	13	14	1	2	3	4	5	6	7	8	9	10	11	12	13	14	Volume	Speed
Bin Speeds	0-30	30-35	35-40	40-45	45-50	50-55	55-60	60-65	65-70	70-75	75-80	80-90	90-100	100+	0-30	30-35	35-40	40-45	45-50	50-55	55-60	60-65	65-70	70-75	75-80	80-90	90-100	100+		
10/29/2019	8.7%	7.3%	11.2%	17.2%	21.2%	19.2%	10.0%	3.7%	1.1%	0.2%	0.1%	0.1%	0.0%	0.1%	822	687	1059	1626	2009	1811	941	353	106	23	5	7	2	5	9456	44
10/30/2019	8.0%	6.2%	10.7%	17.6%	22.6%	19.3%	10.2%	3.8%	1.0%	0.3%	0.1%	0.1%	0.0%	0.0%	760	588	1019	1669	2144	1834	972	358	98	28	8	5	0	2	9485	45
10/31/2019	8.5%	7.6%	11.8%	17.1%	20.7%	18.8%	10.2%	3.9%	1.0%	0.4%	0.1%	0.0%	0.0%	0.0%	799	713	1105	1611	1946	1763	954	363	96	35	6	3	1	3	9398	44
Total	8.4%	7.0%	11.2%	17.3%	21.5%	19.1%	10.1%	3.8%	1.1%	0.3%	0.1%	0.1%	0.0%	0.0%	2381	1988	3183	4906	6099	5408	2867	1074	300	86	19	15	3	10	28339	45

Speed Data Summary

Bin #	1	2	3	4	5	6	7	8	9	10	11	12	13	14	Total
Bin Speeds	0-30	30-35	35-40	40-45	45-50	50-55	55-60	60-65	65-70	70-75	75-80	80-90	90-100	100+	
Survey Total	2381	1988	3183	4906	6099	5408	2867	1074	300	86	19	15	3	10	28339
% Total	8.4%	7.0%	11.2%	17.3%	21.5%	19.1%	10.1%	3.8%	1.1%	0.3%	0.1%	0.1%	0.0%	0.0%	100%
Accumulated %	8.4%	15.4%	26.6%	44.0%	65.5%	84.6%	94.7%	98.5%	99.5%	99.8%	99.9%	100.0%	100.0%	100%	
Inverse Accum. %	91.6%	84.6%	73.4%	56.0%	34.5%	15.4%	5.3%	1.5%	0.5%	0.2%	0.1%	0.0%	0.0%	0.0%	
Average Speed	45 KM/H														



Site notes:

Quadra St between Reynolds Rd and Union Rd

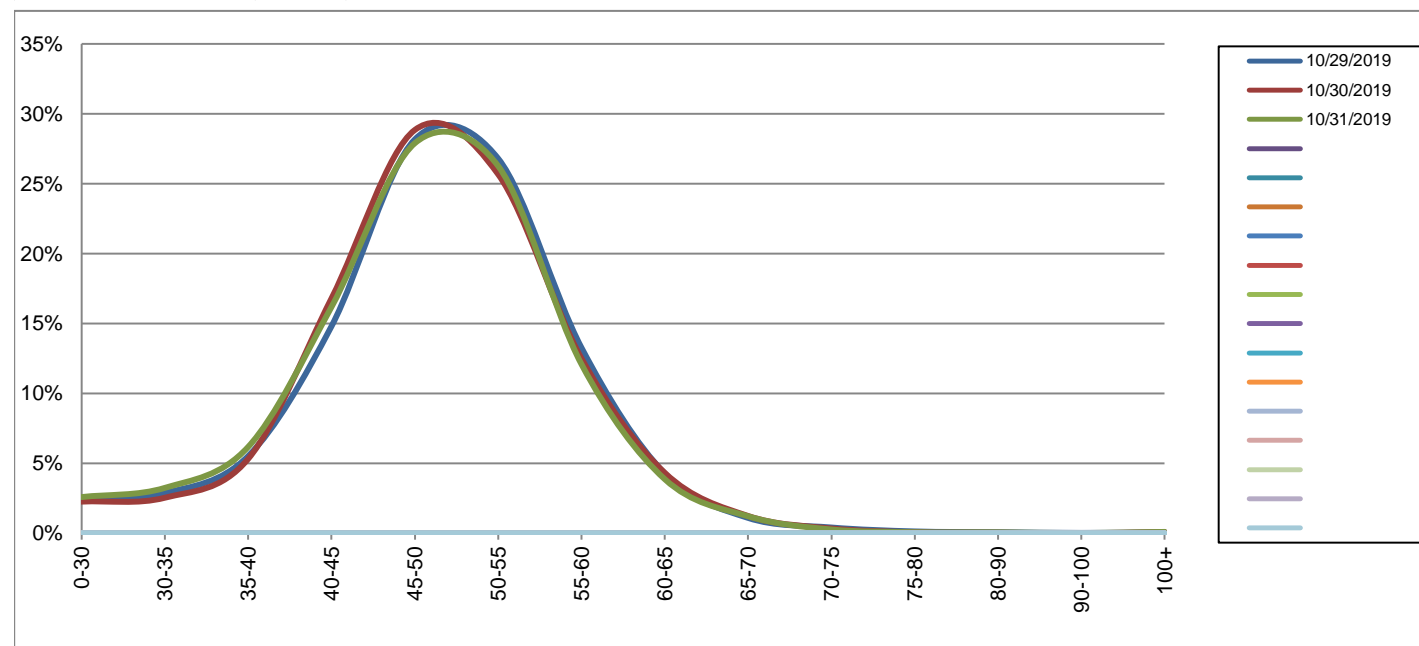
Southbound

October 29, 2019 to October 31, 2019

Daily Speed Bin Percentages															Daily Speed Bin Volumes														Total	Avg.
Bin #	1	2	3	4	5	6	7	8	9	10	11	12	13	14	1	2	3	4	5	6	7	8	9	10	11	12	13	14	Volume	Speed
Bin Speeds	0-30	30-35	35-40	40-45	45-50	50-55	55-60	60-65	65-70	70-75	75-80	80-90	90-100	100+	0-30	30-35	35-40	40-45	45-50	50-55	55-60	60-65	65-70	70-75	75-80	80-90	90-100	100+		
10/29/2019	2.5%	2.9%	5.5%	14.8%	28.2%	26.8%	13.3%	4.3%	1.1%	0.4%	0.1%	0.1%	0.0%	0.1%	217	247	474	1272	2420	2303	1140	367	94	35	11	6	2	5	8593	49
10/30/2019	2.3%	2.5%	5.3%	16.8%	28.8%	25.7%	12.5%	4.3%	1.2%	0.3%	0.1%	0.0%	0.0%	0.1%	194	218	457	1443	2478	2206	1074	371	106	29	6	3	0	7	8592	49
10/31/2019	2.6%	3.2%	6.2%	16.2%	27.9%	26.3%	12.1%	3.9%	1.2%	0.3%	0.1%	0.1%	0.0%	0.1%	224	281	535	1403	2418	2277	1048	335	105	23	6	5	1	8	8669	48
Total	2.5%	2.9%	5.7%	15.9%	28.3%	26.2%	12.6%	4.2%	1.2%	0.3%	0.1%	0.1%	0.0%	0.1%	635	746	1466	4118	7316	6786	3262	1073	305	87	23	14	3	20	25854	49

Speed Data Summary

Bin #	1	2	3	4	5	6	7	8	9	10	11	12	13	14	Total
Bin Speeds	0-30	30-35	35-40	40-45	45-50	50-55	55-60	60-65	65-70	70-75	75-80	80-90	90-100	100+	
Survey Total	635	746	1466	4118	7316	6786	3262	1073	305	87	23	14	3	20	25854
% Total	2.5%	2.9%	5.7%	15.9%	28.3%	26.2%	12.6%	4.2%	1.2%	0.3%	0.1%	0.1%	0.0%	0.1%	100%
Accumulated %	2.5%	5.3%	11.0%	26.9%	55.2%	81.5%	94.1%	98.3%	99.4%	99.8%	99.9%	99.9%	99.9%	100%	
Inverse Accum. %	97.5%	94.7%	89.0%	73.1%	44.8%	18.5%	5.9%	1.7%	0.6%	0.2%	0.1%	0.1%	0.1%	0.0%	
Average Speed	49 KM/H														



Site notes:

Quadra St between Reynolds Rd and Union Rd

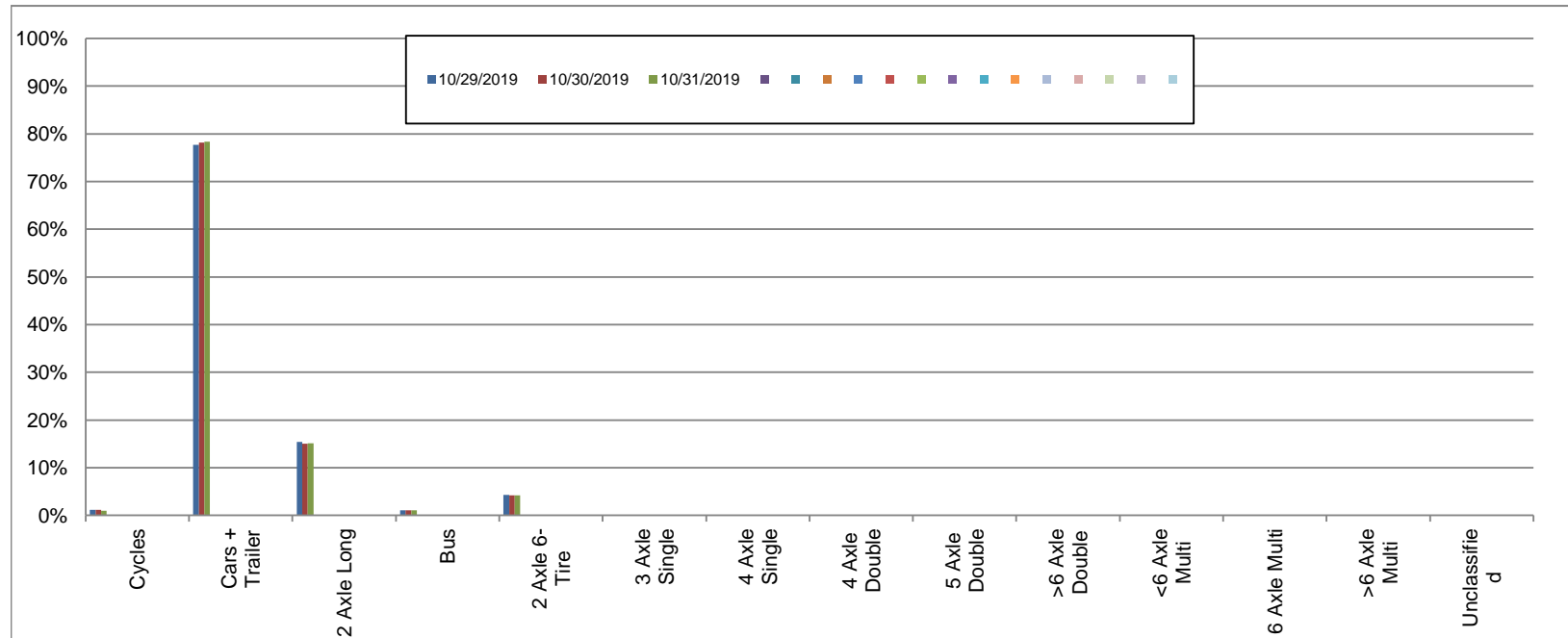
Northbound

October 29, 2019 to October 31, 2019

Daily Class Bin Percentages															Daily Class Bin Volumes														
Bin #	1	2	3	4	5	6	7	8	9	10	11	12	13	14	1	2	3	4	5	6	7	8	9	10	11	12	13	14	Total Volume
Bin Class	Cycles	Cars + Trailer	2 Axle Long	Bus	2 Axle 6-Tire	3 Axle Single	4 Axle Single	4 Axle Double	5 Axle Double	>6 Axle Double	<6 Axle Multi	6 Axle Multi	>6 Axle Multi	Unclassified	Cycles	Cars + Trailer	2 Axle Long	Bus	2 Axle 6-Tire	3 Axle Single	4 Axle Single	4 Axle Double	5 Axle Double	>6 Axle Double	<6 Axle Multi	6 Axle Multi	>6 Axle Multi	Unclassified	Total Volume
10/29/2019	1.2%	77.7%	15.4%	1.1%	4.3%	0.1%	0.0%	0.1%	0.0%	0.0%	0.0%	0.0%	0.0%	0.1%	110	7348	1456	102	405	13	1	8	3	0	0	0	0	10	9456
10/30/2019	1.2%	78.2%	15.0%	1.1%	4.2%	0.1%	0.0%	0.1%	0.0%	0.0%	0.0%	0.0%	0.0%	0.1%	112	7414	1421	103	401	9	1	14	2	2	0	0	1	5	9485
10/31/2019	1.0%	78.4%	15.1%	1.1%	4.2%	0.1%	0.0%	0.1%	0.0%	0.0%	0.0%	0.0%	0.0%	0.1%	94	7367	1416	99	395	10	1	6	4	0	0	0	0	6	9398
Total	1.1%	78.1%	15.1%	1.1%	4.2%	0.1%	0.0%	0.1%	0.0%	0.0%	0.0%	0.0%	0.0%	0.1%	316	22129	4293	304	1201	32	3	28	9	2	0	0	1	21	28339

Class Data Summary

Bin #	1	2	3	4	5	6	7	8	9	10	11	12	13	14	Total Volume
Bin Class	Cycles	Cars + Trailer	2 Axle Long	Bus	2 Axle 6-Tire	3 Axle Single	4 Axle Single	4 Axle Double	5 Axle Double	>6 Axle Double	<6 Axle Multi	6 Axle Multi	>6 Axle Multi	Unclassified	Total Volume
Survey Total	316	22129	4293	304	1201	32	3	28	9	2	0	0	1	21	28339
% Total	1.1%	78.1%	15.1%	1.1%	4.2%	0.1%	0.0%	0.1%	0.0%	0.0%	0.0%	0.0%	0.0%	0.1%	100%
Accumulated %	1.1%	79.2%	94.4%	95.4%	99.7%	99.8%	99.8%	99.9%	99.9%	99.9%	99.9%	99.9%	100.0%		
Inv. Accum. %	98.9%	20.8%	5.6%	4.6%	0.3%	0.2%	0.2%	0.1%	0.1%	0.1%	0.1%	0.1%	0.0%		



Classification Descriptions

Bin #	Bin Description
1	Motorcycles
2	Passenger cars, including those with recreational trailers
3	2-axle pick-ups, vans, and RVs, including those with recreational trailers
4	Buses
5	2-axle, 6-tire single units
6	3-axle single units
7	4-axle single units
8	3-axle or 4-axle double unit
9	5-axle double unit
10	6-, 7-, or 8-axle double unit
11	5-axle multiple unit
12	6-axle multiple unit
13	7-or-more-axle multiple unit
14	Vehicles that could not be classified

Site notes:

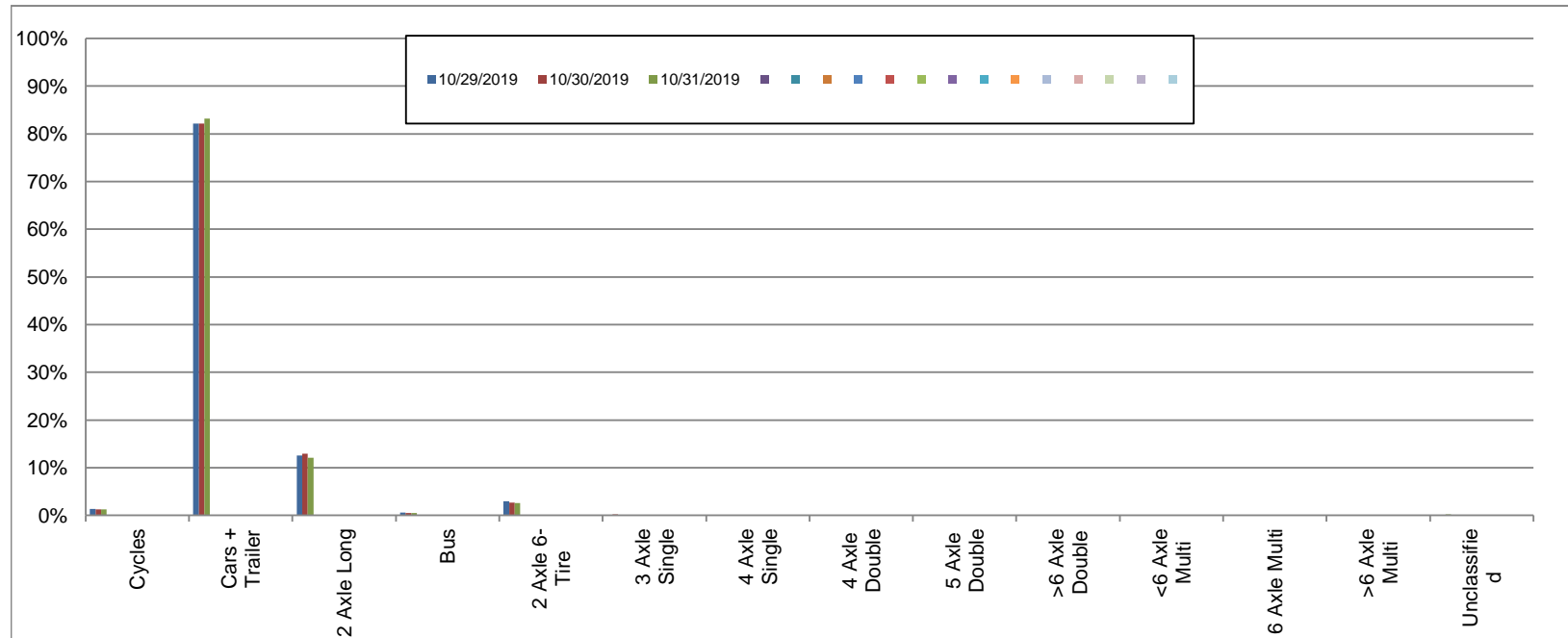
Quadra St between Reynolds Rd and Union Rd

Southbound
October 29, 2019 to October 31, 2019

Daily Class Bin Percentages															Daily Class Bin Volumes														
Bin #	1	2	3	4	5	6	7	8	9	10	11	12	13	14	1	2	3	4	5	6	7	8	9	10	11	12	13	14	Total Volume
Bin Class	Cycles	Cars + Trailer	2 Axle Long	Bus	2 Axle 6-Tire	3 Axle Single	4 Axle Single	4 Axle Double	5 Axle Double	>6 Axle Double	<6 Axle Multi	6 Axle Multi	>6 Axle Multi	Unclassified	Cycles	Cars + Trailer	2 Axle Long	Bus	2 Axle 6-Tire	3 Axle Single	4 Axle Single	4 Axle Double	5 Axle Double	>6 Axle Double	<6 Axle Multi	6 Axle Multi	>6 Axle Multi	Unclassified	Total Volume
10/29/2019	1.4%	82.2%	12.6%	0.6%	3.0%	0.1%	0.0%	0.1%	0.1%	0.0%	0.0%	0.0%	0.0%	0.1%	117	7061	1079	49	258	5	2	8	5	2	0	0	0	7	8593
10/30/2019	1.2%	82.1%	13.0%	0.5%	2.7%	0.2%	0.0%	0.1%	0.1%	0.0%	0.0%	0.0%	0.0%	0.0%	107	7057	1113	45	233	14	1	11	6	0	0	0	1	4	8592
10/31/2019	1.3%	83.2%	12.1%	0.4%	2.6%	0.1%	0.0%	0.1%	0.1%	0.0%	0.0%	0.0%	0.0%	0.2%	111	7211	1049	39	222	12	0	6	5	0	0	0	0	14	8669
Total	1.3%	82.5%	12.5%	0.5%	2.8%	0.1%	0.0%	0.1%	0.1%	0.0%	0.0%	0.0%	0.0%	0.1%	335	21329	3241	133	713	31	3	25	16	2	0	0	1	25	25854

Class Data Summary

Bin #	1	2	3	4	5	6	7	8	9	10	11	12	13	14	Total Volume
Bin Class	Cycles	Cars + Trailer	2 Axle Long	Bus	2 Axle 6-Tire	3 Axle Single	4 Axle Single	4 Axle Double	5 Axle Double	>6 Axle Double	<6 Axle Multi	6 Axle Multi	>6 Axle Multi	Unclassified	Total Volume
Survey Total	335	21329	3241	133	713	31	3	25	16	2	0	0	1	25	25854
% Total	1.3%	82.5%	12.5%	0.5%	2.8%	0.1%	0.0%	0.1%	0.1%	0.0%	0.0%	0.0%	0.0%	0.1%	100%
Accumulated %	1.3%	83.8%	96.3%	96.8%	99.6%	99.7%	99.7%	99.8%	99.9%	99.9%	99.9%	99.9%	99.9%	100.0%	
Inv. Accum. %	98.7%	16.2%	3.7%	3.2%	0.4%	0.3%	0.3%	0.2%	0.1%	0.1%	0.1%	0.1%	0.1%	0.0%	



Classification Descriptions

Bin #	Bin Description
1	Motorcycles
2	Passenger cars, including those with recreational trailers
3	2-axle pick-ups, vans, and RVs, including those with recreational trailers
4	Buses
5	2-axle, 6-tire single units
6	3-axle single units
7	4-axle single units
8	3-axle or 4-axle double unit
9	5-axle double unit
10	6-, 7-, or 8-axle double unit
11	5-axle multiple unit
12	6-axle multiple unit
13	7-or-more-axle multiple unit
14	Vehicles that could not be classified

Site notes: